



New

CHISON Q6

Compact • Innovative • Powerful



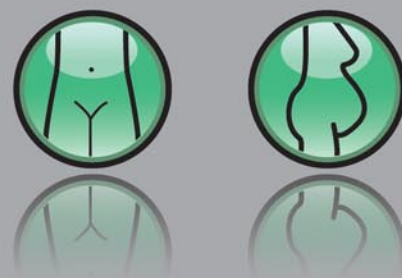
CHISON

Compact In Size Powerful



CHISON Q6 is the compact and stable portable color doppler ultrasound system, which specially designed with multi-application, shared service capabilities.

It delivers superb image quality for multi-applications of abdomen, OB/GYN, small parts, and especially complete cardiovascular





Inside

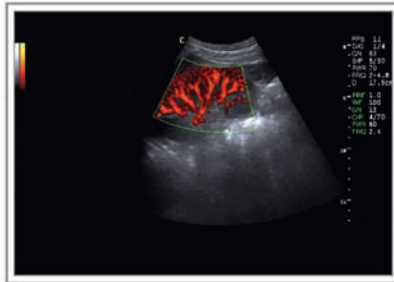
functionality, comprehensive cardiac measurement and analysis package.

A work-flow oriented User Interface is built to allow user-friendly operation with minimum soft key entry. Ergonomical design of keyboard, 15 inch LCD large display, double probe connectors, USB and DICOM connectivity make your scan FAST and EASY, and allow you to focus more on your patients.



Shared Service, Premium

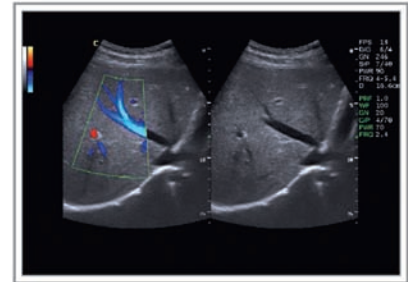
Abdominal



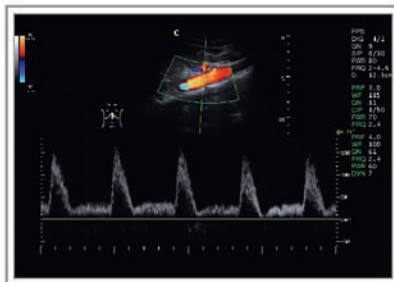
Kidney, PD Mode



Pancreas, B Mode



Liver, B/BC Mode



Aorta, D Mode

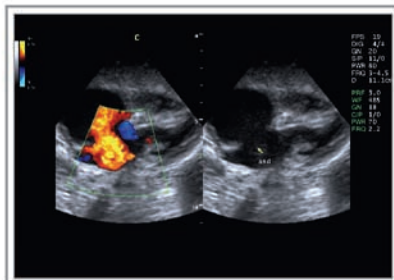


Liver, Direct PD Mode

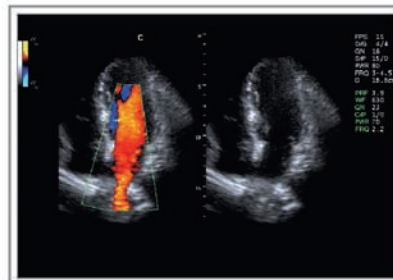


Kidney, CFM Mode

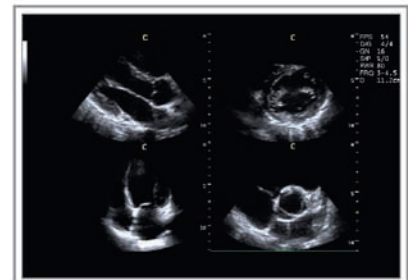
Cardiac



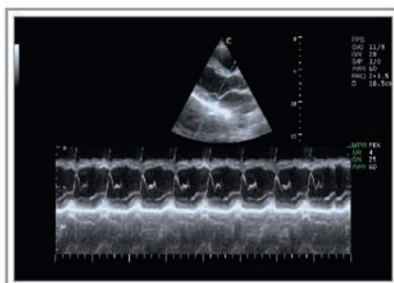
ASD, B/BC Mode



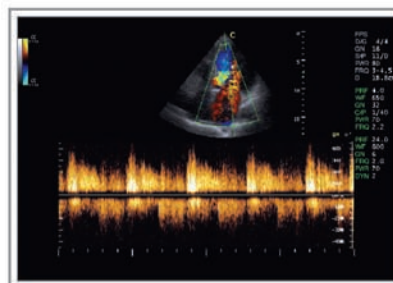
Blood flow of Pulmonary Vein
B/BC Mode-17cm penetration



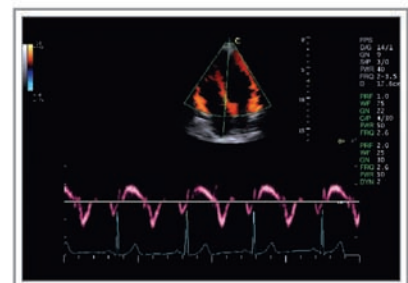
Different Cardiac plane, 4B Mode



LV long axis, Free Steering M Mode

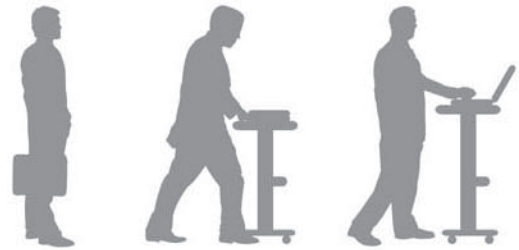


Regurgitation of Mitral valve, CW Mode

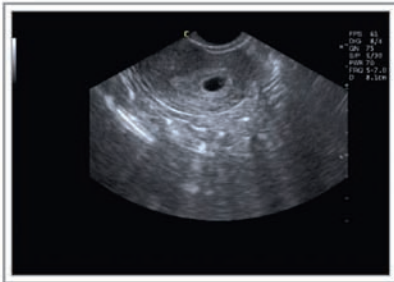


Ventricular Septa, TDI Mode-ECG

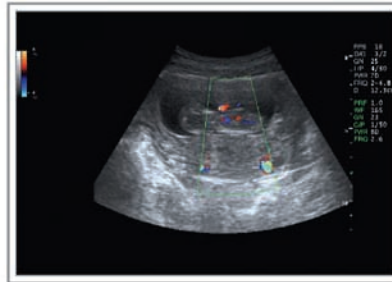
m Images



OB & GYN



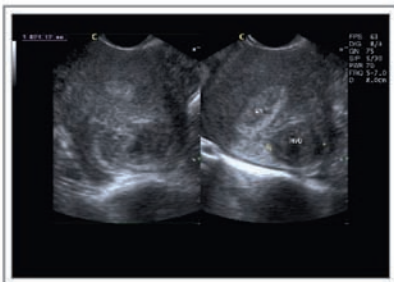
Early pregnancy, B Mode



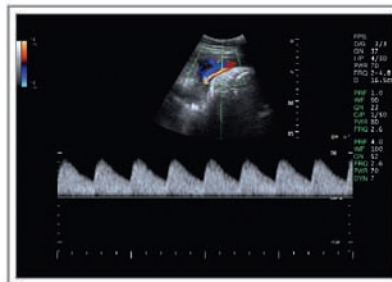
Fetal Heart, CFM Mode



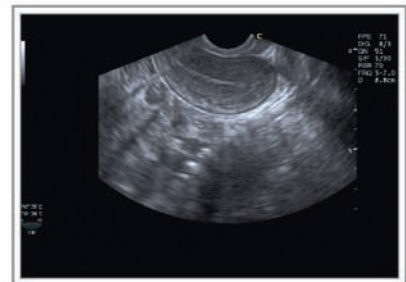
Fetal mouth and chin, B Mode



Hysteromyoma, 2B Mode

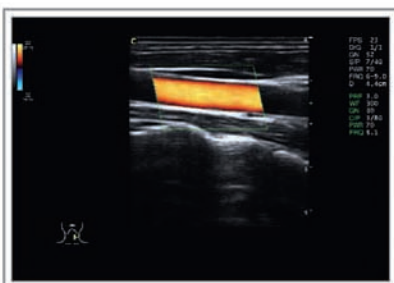


Umbilical Cord, D Mode

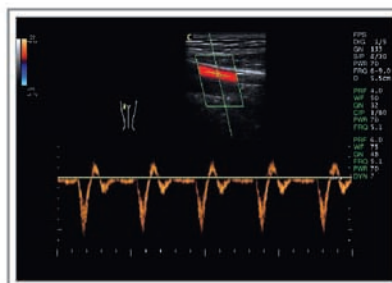


Uterine, B Mode

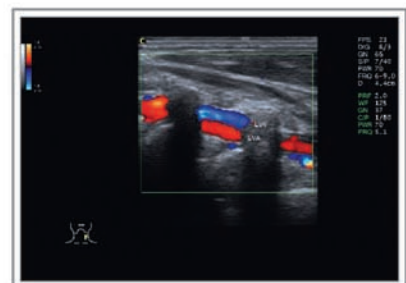
Vascular and Small parts



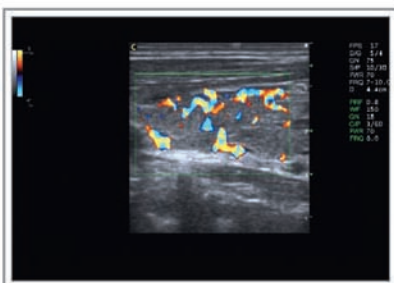
Carotid Artery, CFM Mode



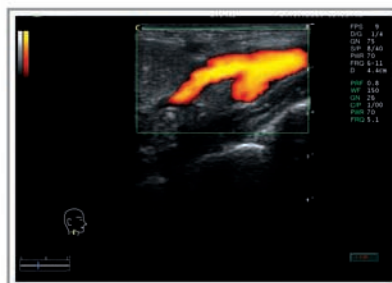
Popliteal vein, PW Mode



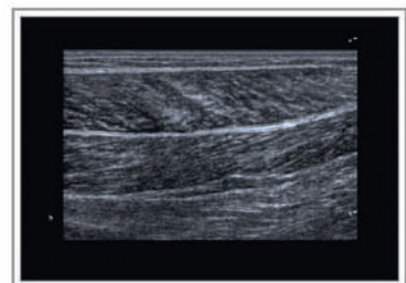
Cervical vertebral artery, CFM Mode



Thyroid Inferno, CFM Mode



Carotid Artery Branch, CPA Mode



Muscle of Leg, Panoramic

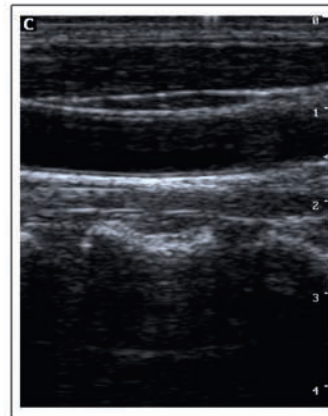
Advanced technologies

Speckle Reduction

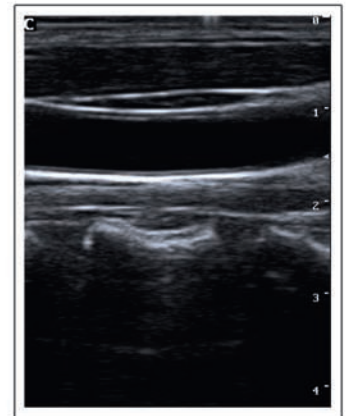
Algorithm(SRA)

Clear out the noise and make the faint edge more appearing

Clear out the noise and make the image more similar to the anatomic standard



Normal

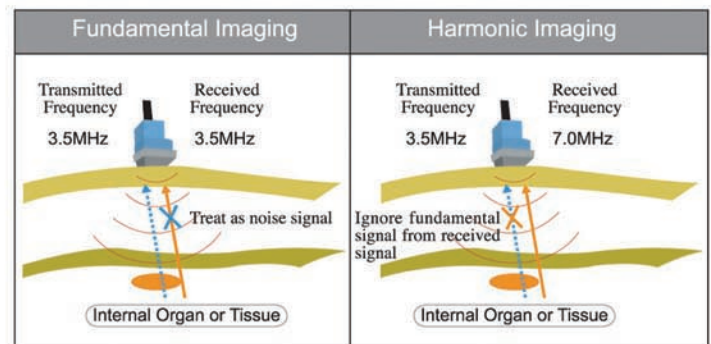


SRA

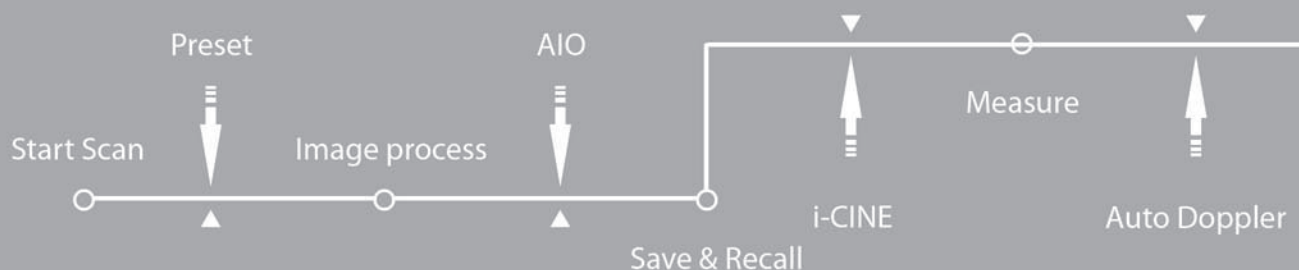
Tissue harmonic

imaging(THI)

It decreases reverberation, beam aberration, and side lobes, as well as increases resolution and cystic clearing.



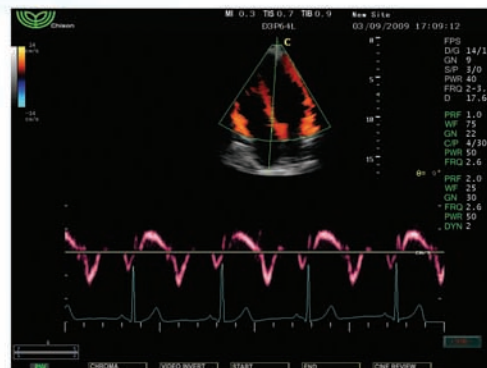
Work-flow solution





Tissue Doppler Imaging (TDI)

Tissue Doppler imaging is a novel echocardiography technique that directly measures myocardial velocity. Systolic TD measurements assess left and right ventricular myocardial contractile function. Diastolic TD values reflect myocardial relaxation.



Fast & Easy

Ergonomical Design

Report

Print directly
to PC Printer

Service

in-system
self-diagnosis
software

Specifications

Imaging Modes:

- B, 2B, 4B, B/M
- B/BC, CFM, Color M
- PW, HPRE, CW
- PD, Directional PD
- TDI(Tissue Doppler Color, Tissue Doppler PW)
- Instant Triplex, Duplex
- Trapezoidal, Panoramic
- Steering M
- Free-Hand 3D
- Chroma B/M/PW/CW

Probes:

- Electronic Convex, Linear, Transvaginal, Phased array, Pediatric probes
- Wideband(broadband) Multi-frequency

Imaging Processing technologies:

- Double Phase Digital Beam Forming(DPDBF)
- THI on all probes
- Speckle reduction Algorithm(SRA)
- Multiple Compound Imaging(MCI)
- i-Image™

Measurement & Report Packages:

- OB & GYN
- Cardiac
- Vascular
- Urology

Professional Clinical Applications:

- Abdominal
- OB & GYN
- Cardiac
- Vascular and Small parts
- Pediatric
- Neonatal
- Musculoskeletal

Standard Configuration:

- Main unit, 15" LCD, 2 probe connectors, Hard disk (160GB), 2 USB ports

Options:

- 3.5 MHz Convex probe
- 7.5MHz Linear probe
- 6.0MHz Transvaginal probe
- 3.0MHz Phased array probe
- 5.0MHz Pediatric probe
- 5.0MHz TEE probe(Adult)
- Free-hand 3D
- Extended Cardiac Package: ECG, Steering M, Color M, TDI, Advanced cardiac measurement software.
- i-Image™
- Video printer, PC printer
- Trolley
- DICOM

www.chison.com.cn

CHISON Medical Imaging Co., Ltd.

ADD: No.9 Xin Hui Huan Road, New District, Wuxi City, Jiang Su Province, China 214028

TEL: 0086-510-85310593/85310937 FAX: 0086-510-85310726

E-Mail: export@chison.com.cn